



The arrival of Autumn brings a dynamic change to Rotorua Museum's exhibition programme. It features beautiful woven taonga by local and international weavers alongside quirky corrugated iron creations and art from our collection. These are supported by a great range of events for all ages.

Kauroto Te Kanawa, Kōwhiri mātā (detail), 1989.



9am – 5pm
(MAR – NOV)
OPEN DAILY
9am – 6pm
(DEC – FEB)

Museum Café

Enjoy delicious coffee and a tasty all-day menu with lovely views overlooking Government Gardens.

Museum Gift Shop

Browse a great range of quality New Zealand crafts, souvenirs and books.

Friends of Rotorua Museum

Become a member of *Friends of Rotorua Museum*. Enjoy openings, talks and more. Email: rotoruauseumfriends@gmail.com

Contact Details

Rotorua Museum
Phone: 07 350 1814
Oruahata Drive
Government Gardens
Rotorua
rotoruauseum.co.nz



ROTORUA
museum
Te Whare Taonga o Te Arawa
ART | CULTURE | HERITAGE



AUTUMN
2015
SEASON

ROTORUA
museum
ART | CULTURE | HERITAGE

WHAT'S ON



ROTORUA
museum
Te Whare Taonga o Te Arawa
ART | CULTURE | HERITAGE



Body in Action Until 15 March 2015

Designed for children of all ages, this interactive exhibition offers an amazing journey of discovery through the human body. Developed and toured by Te Manawa Museums Trust.

Children enjoying *Body in Action*, December 2014. Rotorua Museum.



Pick & Mix: Selected works from Rotorua Museum's collection Until 10 May 2015

More than 50 diverse items from Rotorua Museum's collection — chosen by staff — including the beautiful, the unusual and the rarely seen. Ask at reception for the kids *Pick & Mix* Activity Trail.

Pick & Mix exhibition, October 2014. Rotorua Museum.



Corrugations — The Art of Jeff Thomson

3 April–21 June 2015

Corrugations showcases three decades of work by New Zealand sculptor Jeff Thomson, known as 'the Iron Man of Australasia'. Exploring the processes Thomson uses to make his corrugated iron sculptures, this quirky exhibition includes chickens, flower bouquets, kete and more.

Jeff Thomson, *Kete* (detail), 2011. Collection of Jeff Thomson & Shona Cameron. Photograph by Rory Thomson.

tauranga art gallery
toi tauranga
A TAURANGA ART GALLERY TOURING EXHIBITION

CooneyLeesMorgan

On the Wing — Urban release of the NZ falcon Until April 2015

A special partnership between Rotorua Museum and Wingspan has seen the release of two more endangered kārearea (NZ falcons) into Government Gardens. Come and view the exhibition *On the Wing* and see if you can spot them.

Maia in Pohutukawa tree, 18 January 2015. Photo by Julie Parsons.

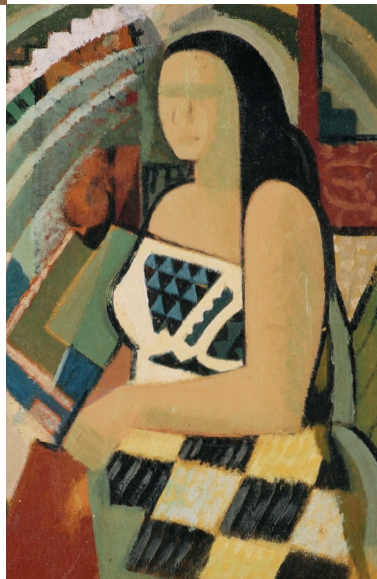


Whiria — Weaving Global Connections

28 March–7 June 2015

Whiria, which means 'to weave together', features beautifully woven taonga (treasures) from private and public collections. Showcasing some of Aotearoa's most respected weavers alongside highly skilled international weavers, the exhibition explores the distinctive materials used in indigenous weaving.

Christina Hurhira Wirihana, *Kete Weka* (detail), 2013. Courtesy of the artist.



Faces & Places Art & History Works from the Rotorua Trust Heritage Collection 30 May–1 November 2015

Curated by John Perry in conjunction with Rotorua Museum, this exhibition features highlights from the Trust's significant collection of paintings, photographs and prints.

John Weeks, *Maori Woman in Abstracted Landscape* (detail). Rotorua Trust Heritage Collection.



EVENTS



Children's Day

Family fun in *Body in Action* with face painting and spot prizes.
Date: Sunday 1 March 2015
• 10am–3pm
Cost: FREE child Museum entry with every paying adult

International Weavers' Talk

Bud Lane and Charlene Krise talk about their works on display in *Whiria*.
Date: Sunday 29 March 2015
• 2pm
Cost: FREE with admission

International Weaver's Talk

Patti Puhn talks about her works on display in *Whiria*.
Date: Wednesday 1 April 2015
• 5.30pm
Cost: FREE with admission

The Great Rotorua Museum Easter Egg Hunt

The hunt is on with a chocolate hamper to be won.
Dates: Friday 3 April–
Sunday 19 April 2015
• 9am–5pm
Cost: FREE with admission

April School Holiday Drop-In Poppy Crafts

Family craft activities.
Dates: Saturday 11–
Friday 17 April 2015
• 10am–3pm
Cost: FREE with admission

Yarn Bomb Poppy Making

Learn how to make poppies to add to our Gallipoli Centenary installation.
Dates: Saturday 11 and
Sunday 12 April 2015
• 10am–2pm
Cost: FREE with admission

Field of Remembrance— Government Gardens

View a field of crosses for Rotorua soldiers who died during WW1.
Dates: Friday 24–
Tuesday 28 April 2015
Cost: FREE

ANZAC Day—Ka maumahara tonu tātau ki a rātou

Leave a message on our ANZAC remembrance boards.
Date: Saturday 25 April 2015
• 7am–5pm
Cost: FREE with admission

John Perry Floor Talk

Previous Rotorua Museum Director shares stories about the Rotorua Museum collection in the *Pick and Mix* exhibition.
Date: Sunday 3 May 2015
• 2pm
Cost: FREE with admission

Local Weavers' Talk

Hear from well known local weavers about the materials and works on display in *Whiria*.
Date: Sunday 17 May 2015
• 2pm
Cost: FREE with admission

Jeff Thomson Floor Talk

Artist Jeff Thomson talks about his corrugated iron sculptures.
Date: Sunday 31 May 2015
• 2pm
Cost: FREE with admission

Event times, dates and prices may change. For specific event information, prices and bookings contact Rotorua Museum, email: rotoruumuseum@rdc.govt.nz or phone 07 350 1814. For complete details of what's on at Rotorua Museum visit www.rotoruumuseum.co.nz