

TERM 1-2  
2019



ROTORUA  
museum

*Te Whare Taonga o Te Arawa*  
ART | CULTURE | HERITAGE



ROTORUA  
LIBRARY

TE AKA MAURI

# LEOTC EDUCATION PROGRAMMES



## BRAVE HEARTS

THE NEW ZEALAND CARDIAC STORY

Education Programme  
available until  
5 March 2019



ROTORUA  
LAKES COUNCIL  
Te kaunihera o ngā roto o Rotorua

# Kia ora and welcome

Good news on the museum earthquake strengthening project. We are pleased to inform you we have a tentative opening year of 2021. Final taonga have been removed from the building for safe storage and the concept design will be developed into detailed drawings and specifications. Building work is due to start in July 2019.



Rotorua Library Te Aka Mauri celebrates its 1st Birthday at the end of January. To mark this important occasion there will be a festival of activities from Wednesday 30 January – Sunday 3 February. Look out over the next few months for more information which will include special themed days such as one on: Te Arawa, Health, Heritage and Research and Community. Finishing off with the actual birthday of Te Aka Mauri on 3 February. As part of this week we will be holding a special teacher afternoon.

Brave Hearts A New Zealand Coronary Story is on in Jean Batten Square next to the library and we are offering full curriculum-linked programmes during the school term. If you are interested in booking or would like more information you'll find it in this booklet.

Planting of our Māra Kai garden took place in early November and will be ready for harvesting in April – May 2019.

Te Arawa Journeys is an exciting new programme for Term Two designed specifically for delivery in the Makerspace. Using robotics and coding students can learn about the journeys of the great Te Arawa tupuna like Ihenga and Hatupatu. More details to follow in Term One.

Lastly we are pleased to announce the appointment of Jessica Wilkes as the new Digital Technology Educator here at the Makerspace in Te Aka Mauri. Jessica brings with her a vast amount knowledge in technology, coding, robotics and design. She also has a sound understanding of the new digital technology curriculum and we look forward to her starting in the new year. See you soon.

Ngā manaakitanga,  
The Arts and Culture Education Team  
Rotorua Museum and Rotorua Library Te Aka Mauri



**Emma Liley**  
Education Lead  
Arts and Culture



**Kristina Joyce**  
Education Assistant



**Taupopoki  
George McLeod**  
Education Coordinator



**Rebecca Moore**  
Education Coordinator  
Visual Arts

**SAVE THE DATE :**



**MAKERSPACE  
TEACHER'S EVENT**

**Wednesday 30 January 2019 @ 2pm -4pm**

Bring your syndicate and join our team for a special afternoon exclusively for teachers to find out more about the technology we use as part of our programmes in the Makerspace.

**Refreshments provided.**  
**Please RSVP by Wednesday 23 January 2019 to**  
[kristina.joyce@rotorualc.nz](mailto:kristina.joyce@rotorualc.nz)



**Education programmes held at:**  
**Te Rūnanga Tea House | Makerspace Te Aka Mauri**  
**Rotorua Childrens Art House | Government Gardens**  
**Rotorua Settlers and Steam Museum**

**WE SUPPLY**

- Confirmation by email of:
  - Date and time
  - Lesson outline
  - RAMS
  - Handy hints
- Relevant pre and post-visit resources
- Planning focus sheets to tailor lessons to suit
- All resources needed while undertaking one of our programmes

# BRAVE HEARTS

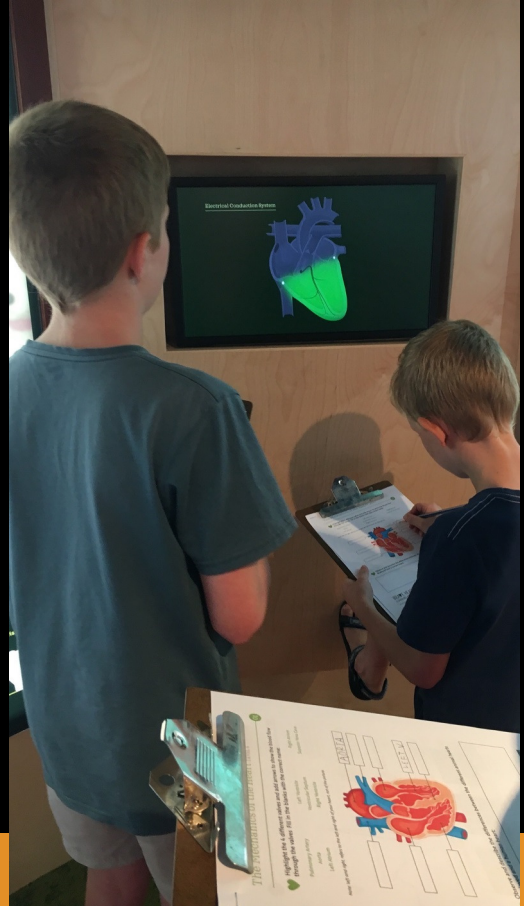
## THE NEW ZEALAND CARDIAC STORY

Until 5 March 2019

Suitable for Years 5 - 10

BOOK NOW!

SPACES FILLING QUICKLY



**Curriculum Links:  
Science and Health**

**Duration: 1.5 hours**



**Get your students to gain new insights about the anatomy, mechanics and physiology of the heart.**

**Brave Hearts is an exhibition developed by the Auckland Medical Museum Trust which brings the pioneering work of New Zealand's heart clinicians and the bravery of their patients to life.**

**Through interactive displays the exhibition explains how the heart works, how we investigate heart disease and the largely untold story of New Zealand's leading role in the evolution of heart surgery.**

**Jean Batten Square, Rotorua**  
**FREE for local Rotorua schools**



# Digital Technology

## Cubelets - Robot Blocks

Suitable for Years 1 – 4

Curriculum Link: Digital Technology

Duration: 1 hour

This programme introduces Cubelets to students in a play based learning environment.

Small Cubelet pieces connect in various combinations and work together to form different types of robots.

Students will learn like Cubelets to work in a team, respect and look after these delicate robots and to take turns sharing ideas.

Venue: Makerspace - Rotorua Library Te Aka Mauri .



Tawhaki and Tane, sculptures by David Trubridge are made possible thanks to the Wright Family Foundation

The Makerspace has been made possible thanks to Te Aka Mauri Founding Resource Funder BayTrust and Programmes Partner Unison.



Supporting Great Communities



**MAKERSPACE**



**ROTORUA  
LIBRARY**  
TE AKA MAURI

# Keva Block Mazes and Animation

Suitable for Years 3 – 8

Curriculum Link: Digital Technology

Duration: 1.5 hours



This programme familiarises students with some of the key concepts of position and direction in a series of maze related activities.

Students will come up with a maze of their own design using Keva blocks. Their progress is recorded via time lapse video. They will create an object out of Lego which they will move through the maze and record its journey via a stop motion animation app.

This engaging programme will help develop lateral thinking in a fun environment. It teaches children to think in three dimensions and develops problem-solving skills. Students will need to organise and plan their construction using critical thinking and creativity.

Venue: Makerspace - Rotorua Library Te Aka Mauri.

NB: BYO iPads - minimum six required per class.

TOMPKINS  
WAKE

The Computer Suite has been made possible thanks to Te Aka Mauri Founding Resource Funder BayTrust and Programmes Partner Tompkins Wake.



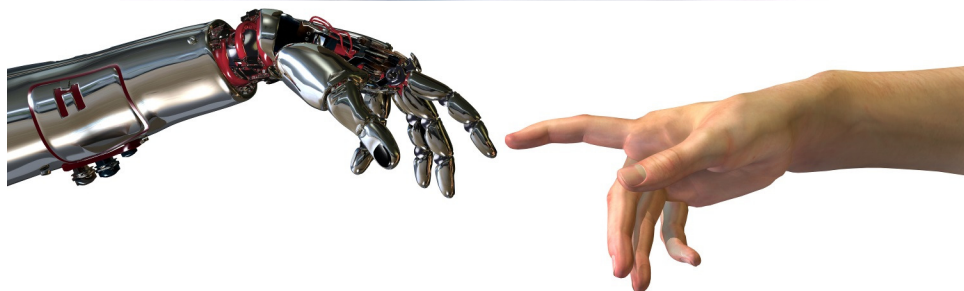
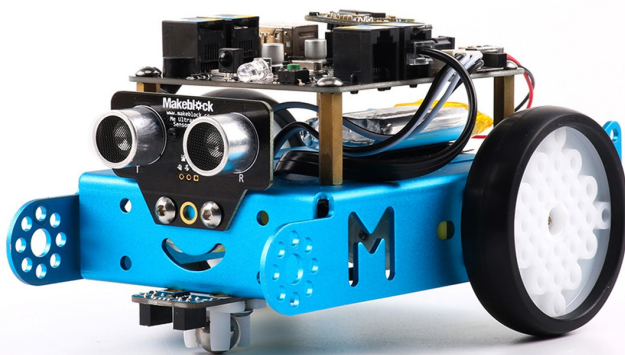
# MBots 101

Suitable for Years 5 – 8  
Curriculum Link: Digital Technology  
Duration: 1.5 hours

**NEW PROGRAMME  
AVAILABLE**

M-Bots are robot kits designed for young people that make teaching and learning robot programming simple yet fun.

Students will build their M-Bot from scratch, they will work collaboratively and develop their logical thinking and design skills.



To be updated about all our programmes send an email with **“SUBSCRIBE”** in the subject line to [george.mcleod@rotorualc.nz](mailto:george.mcleod@rotorualc.nz)



# AMAZING RACE



Curriculum Links: Social Sciences and Physical Education

Suitable for Year 1 – 13 students

Duration: 2 hours

Government Gardens is not just a pretty place to go for a walk!

Uncover the mysteries of this special historic place, race against others in an Amazing Race to find clues, meet Mr Malfroy and Queen Victoria along the way. Combine this with an optional swim at the Blue Baths for a fun trip out.

*\*The Amazing Race can be substituted for another education programme if requested.*



Courtesy of The Blue Baths

Special Blue Baths discount rates offered for New Zealand schools booking this trip.

Prices:

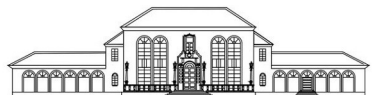
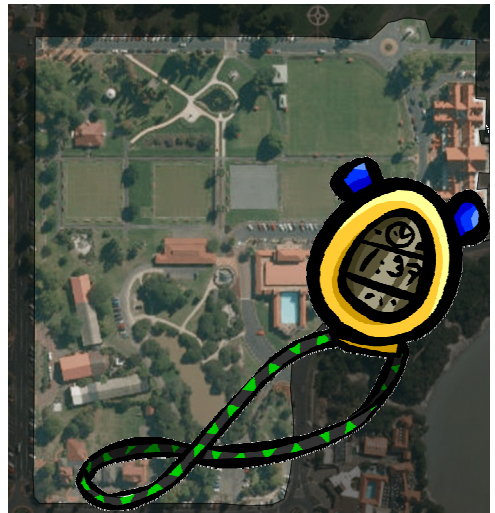
Students \$4.50

Swimming adults (13yrs+) \$9.00

Non-swimming adults free of charge

All bookings for this package inclusive of the Blue Baths must be made through our education staff.

An additional charge for our programme applies for all non-Rotorua residents.



**The Blue Baths**

# Māra Kai

A TRADITIONAL MĀORI GARDEN

Curriculum links: Social Sciences  
Suitable for Year 3 – 10 students  
Duration: 2 hours

29 April 2019 - 31 May 2019  
(Available every day except Wednesday)



Students will take part in a hands - on thinking based session exploring the use of Māra kai by early Maori.

They will critically examine types of kai (food) and gardening tools available in the past as well as understand the role that seasons and karakia (prayer) played in the success of crops.

Experiences will include working co-operatively in Rotorua Museum's own Māra kai and participating in a range of tasks such as preparing soil, weeding, pest control and harvest of crops.



The session will conclude with an opportunity to sample kumara, hue (gourds) and riwai (potatoes).

\$1 per student for resources.



**RETURNING PROGRAMME**

# Tarawera

## Te Maunga Tapu

**Curriculum Link:** Science

**Suitable for** Year 3 - 10 students

**Duration:** 1.5 hours

**Venue:** Te Rūnanga Tea House

Discover why we have volcanoes in New Zealand (tectonic plate theory). Students will investigate what occurred when Mt Tarawera erupted in 1886 and how this event changed the surrounding environment.

Students will sort volcanic rocks 'hands-on', gain insight into how volcanoes are monitored and how the likelihood of future eruptions is predicted.

The film *Rotorua Stories* completes this session.



# Tarawera Legacy

**Curriculum Links: Social Sciences and Science**  
**Suitable for Year 3 — 10 students**

The 1886 Mt Tarawera eruption can be explored in depth by visiting three Rotorua attractions.

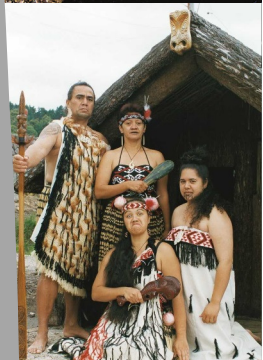
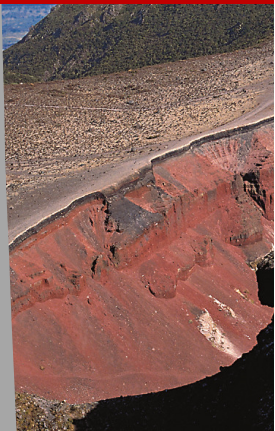
Students will visit sites relevant to the eruption which caused widespread devastation to the land and the loss of 120 lives.

Te Wairoa was the main village near Mt Tarawera during the eruption. Today it survives in a new form as the Buried Village. A true excavated village, remnants of life from the 1800s can still be seen.

The Whakarewarewa Thermal Village is where many survivors of the eruption rebuilt their lives and families. Explore the wonders of the geothermal resources used every day in a living village environment.

## UPDATE:

Museum staff have relocated their teaching space and are able to provide a curriculum linked hands-on programme on the Tarawera Eruption.



**ROTORUA**  
**museum**  
*Te Whare Taonga o Te Arawa*  
ART | CULTURE | HERITAGE



**Whakarewarewa**  
*The Living Maori Village*



**BURIED**  
**VILLAGE**



## Available Itineraries

### Itinerary One:

Timing: Day Starts: 9am  
Day Finishes: 3:15pm

Time		Notes
9am - 10.30am	<b>Rotorua Museum</b>	Lesson on Tarawera
10.30am - 11am	MORNING BREAK - Travel to Whakarewarewa Village	
11am - 1pm	<b>Whakarewarewa Village</b>	Concert time: 11:15am Guided Tour
1pm - 2pm	LUNCH - Travel to Buried Village	
2pm - 3.15pm	<b>Buried Village</b>	Self guided tour



### Itinerary Two:

Timing: Day Starts: 9am  
Day Finishes: 3:30pm

Time		Notes
9am - 10.15am	<b>Buried Village</b>	Self guided tour
10.15am - 11am	MORNING BREAK - Travel to Te Rūnanga Tea House (Museum)	
11am - 12.30pm	<b>Rotorua Museum</b>	Lesson on Tarawera
12.30pm - 1.30pm	LUNCH - Travel to Whakarewarewa Village	
1.30pm - 3.30pm	<b>Whakarewarewa Village</b>	Concert time: 2pm Guided Tour



### Itinerary Three:

Timing: Day Starts: 10am  
Day Finishes: 4:15pm

Time		Notes
10am - 12pm	<b>Whakarewarewa Village</b>	Concert time: 11.15am Guided Tour
12.15am - 1pm	LUNCH - Travel to Te Rūnanga Tea House (Museum)	
1pm - 2.30pm	<b>Rotorua Museum</b>	Lesson on Tarawera
2.30pm - 3pm	Travel to Buried Village	
3pm - 4.15pm	<b>Buried Village</b>	Self guided tour



2019 until 30 Sept	Primary	Secondary	Adults
Rotorua Schools	\$12.00	\$17.50	\$20.00
Bay of Plenty Schools	\$17.00	\$12.50	\$35.00
National Schools	\$24.00	\$31.50	\$37.50

### Notes:

- Most schools choose to visit the three Tarawera Legacy venues in one day. There is also the option of spreading the package over two or three days if preferred.

One adult free per 10 students

# Ngā Pūmanawa o Te Arawa

## Early Te Arawa Games and Toys

Curriculum Links:

Social Sciences and Technology

Suitable for Year 1 — 8 students

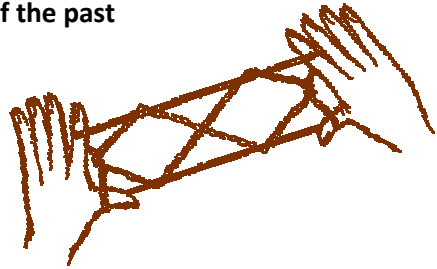
Duration: 1.5 hours

Have fun playing traditional games and trying toys enjoyed by early Māori children in Aotearoa.

Students will compare games and toys of the past to those used today.

They will decorate their own pūrerehua (bullroarer) to take home afterwards.

Cost \$1 per student for resources.



## Horohopu - A Traditional Māori Tākaro (Game)

Curriculum Links:

Social Sciences and Physical  
Education

Suitable for Year 3 — 8 students

Duration: 2 hours

Play it at home, at school or at a friend's house. Have a go with the Rotorua Museum team learning an ancient game played by early Māori.



Children will learn how to play Horohopu. This game was played by Māori to enhance balance, speed, coordination, stamina, and working as a team.

They will also have participate in making the poi toa used to play this fun Māori game.



**ROTORUA**  
**museum**

*Te Whare Taonga o Te Arawa*  
ART | CULTURE | HERITAGE



# Te Arawa Journeys

From 11 March 2019

Curriculum Links:

**Social Sciences and Technology**

**Suitable for Year 1 — 10 students**

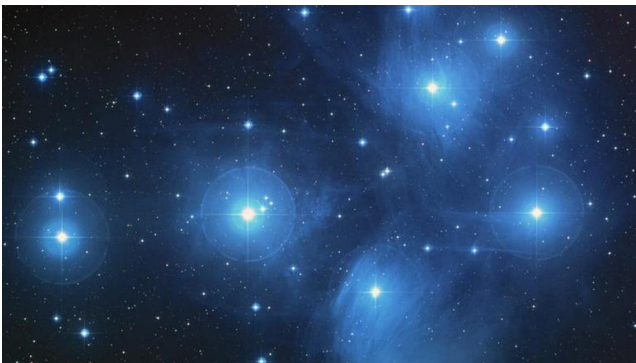
**Duration: 1.5 hours**



Learn more about Te Arawa tūpuna (ancestors) who explored early Rotorua before mass settlement by early Māori.

Ihenga and Hatupatu's deeds are noted with events and stories still remembered to this day.

We are pleased to offer this special programme in the Makerspace where students can follow in the footsteps of these great explorers and ancestors using creative technologies.



**MATARIKI**  
**PROGRAMME**  
**AVAILABLE IN**  
**TERM 3**

More details to follow ...

**1 April - 12 April 2019**

Curriculum links: Visual Arts

Suitable for Year 10 – 13 students

Duration: 1 hour



**EARLY BOOKING  
RECOMMENDED**

# 2019 TOP ART

Visual Art from New Zealand's top secondary school art students feature in a touring exhibition on show from Kerikeri to Invercargill.

The exhibition of art folios, all of which gained excellence in NCEA level three in 2018, is a rare opportunity for 2019 visual arts students and teachers to view high-calibre art and see the standard required to achieve excellence.



NEW ZEALAND QUALIFICATIONS AUTHORITY  
MANA TOHU MĀTAURANGA O AOTEAROA



Blake Tanner, Painting. Spotswood College

**Painting | Design | Printmaking | Sculpture | Photography | Digital Media**



Curriculum Link:  
Social Sciences

Suitable for  
Year 3 – 10 students

Duration: 2 hours

# BEHIND THE SCENES @ Offsite

Rotorua Museum cares for a wide range of objects, taonga (treasures), images and artworks relating to the Rotorua region. Most of these precious items are stored and cared for in our offsite storage facility away from the main museum building.

Join us for a very special opportunity to visit the museum collection and the staff who look after it.

Students will gain an insight into what items are accepted into the collection and why.

They will see what happens behind the scenes, explore items that have never been on display before and ask questions of our staff who work with these fascinating objects every day.

Students will discuss what messages objects, taonga and photography reveal to connect us to Rotorua and it's story.

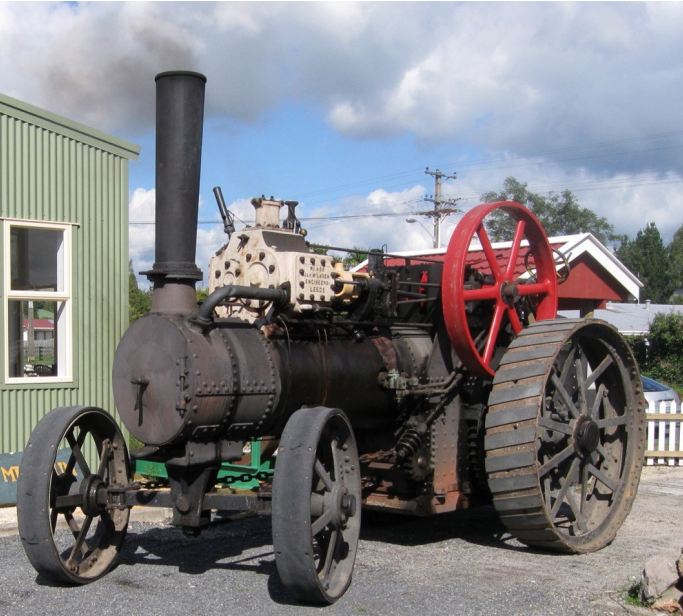
This session concludes with a fun hands-on "be a curator" activity where students will apply and use the collection criteria they have learnt whilst visiting.



Because of the nature of a visit to this secure facility the following conditions apply (please read):

- One class per session only
- Subject to the availability of museum collection staff
- 1:5 adult student ratio required
- Unfortunately the Museum Bus service cannot be used for this programme

# Settlers &



(Robinson Ave, Hannah's Bay, Rotorua)

**Curriculum Links:**  
Social Sciences, English, Technology and Science

**Suitable for**  
Year 1 – 10 students

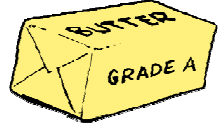
**Duration: 2 hours**  
Rotorua Museum, in conjunction with the Rotorua Settlers and Steam Museum, are proud to offer this hands-on programme for students.

Investigate what everyday life was like in the late 1880s to early 1900s. Students will experience the homes, shops and chores common to the time.

Objects and technologies from the period will be used to make butter, do the washing, play early pioneer games and dress in period costume.



# Steam



**Cost:**  
\$5 per student (includes train ride)  
\$5 per accompanying adult  
Teachers free of charge

**Conditions (please read):**

- One or two classes per session only
- Available Thursdays during term time (other days by special arrangement)
- Unfortunately the Museum Bus service cannot be used for this programme



**Ideal for junior to middle school classes**



# On Point

Curriculum Link:

## Visual Arts

Suitable for Year 3-10 students

Duration: 2 hours

**AVAILABLE FROM TERM TWO**

Students will learn more about the neo impressionist technique known as Pointilism.

This hands-on visual arts programme explains the origin of this style of art and how small, distinct dots of color are applied in patterns to form an image.

Students will then work on their own artworks using inspiration from landmarks of Rotorua or places significant to them.



# Introducing Geothermal Environments

Curriculum Link:

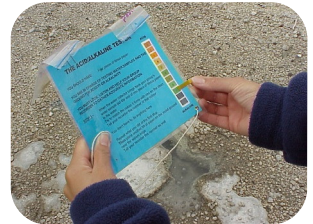
## Science

Suitable for Year 3 — 10 students

Duration: 2 hours

Be a scientist and discover how geothermal activity is produced and why it occurs in the Rotorua region.

This hands-on session will have children observing, testing, recording, comparing and analysing geothermal activity in and around Sulphur Point and Government Gardens.



# TRUBRIDGE AND TECHNOLOGY

Curriculum Link:

**Visual Arts and Technology**

Suitable for Year 3 -10 students

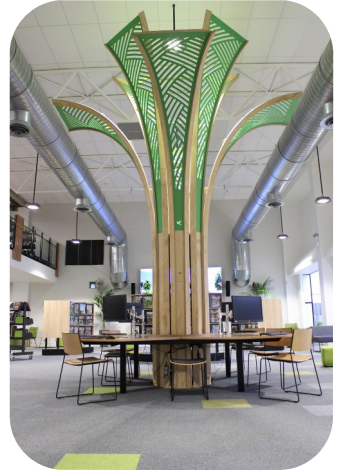
Duration: 2 hours

**AVAILABLE FROM TERM TWO**

Nature and objects from the past inspire many designers to create fun and exciting objects. In this visual arts and technology programme students will explore David Trubridge's amazing designs in the new Te Aka Mauri building.

Students will be involved in interactive activities to explore his designs and find the links to nature and māori taonga (treasures).

Students will have the opportunity to create their own innovative design, using a natural artefact as inspiration and incorporating technological processes.



## Describe and Promote a New Zealand Tourist Destination — Rotorua

Supports unit standard 24733

Curriculum Link:

**Geography — NCEA L2/3**

Suitable for Year 12/13 students

Duration: 2 hours



Investigate and describe processes which contribute to the tourism sector.

Guided by an educator, students will explore a brief history of tourism in Rotorua.

They will discover what attractions, experiences and special events are offered to visitors today and how these are promoted.

Students will have the opportunity to analyse statistical data about visitors to Rotorua as well as understand the effects tourism has socially, environmentally and economically.

# Tarawera

## Extreme Natural Events

Supports achievement standard 91007

Curriculum Link:

**Geography - NCEA L1**

Suitable for Year 11 students

Duration: 2 hours

**Demonstrate geographic understanding of environments that have been changed by extreme natural events.**

**Focus: Volcanic Eruptions**

**Students will be given an introductory talk about extreme natural events focusing specifically on the 1886 Mt Tarawera eruption and the Rotorua landscape.**



**This will summarise the processes that produce volcanic eruptions, the sequence of events that occurred during the Tarawera eruption and how the environment was changed as a result.**

**Staff will talk about the effects the eruption had on people and the environment, both short and long term, and what may happen to the mountain in the future.**



(Top) Ruins of Te Mu church, Te Wairoa after the Tarawera eruption of 10 June 1886. Photograph by Tuttle and Co. Rotorua Museum Te Whare Taonga o Te Arawa (OP-2972) (Middle and Bottom) Mt. Tarawera. Images courtesy of Destination Rotorua Marketing

# Tourism Development In Rotorua

Supports achievement standard 91427

Curriculum Link:

**Geography — NCEA L3**

Suitable for Year 13 students

Duration: 2 hours

## A Cultural Process – Tourism Development

**Demonstrate understanding of how a cultural process shapes a geographic environment.**

**Students will receive an interactive, relevant and engaging talk while learning about tourism development.**

**This will summarise the birth of tourism at the Pink and White Terraces and the effects of the Mt Tarawera eruption in 1886. It will cover the diversification and advancement of the township and the attempt at catalytic development by the Government in constructing the Bath House. The talk will also explore the mass development phase and specialisation of tourism in recent years.**

**Staff will highlight the impact that social, political, economic, natural and technological elements have on the environment of Rotorua.**



Pink Terrace, 1880-1886, by Burton Brothers Studio, maker unknown. Te Papa (C.018398)



Left to right: Agroventures. Courtesy of Destination Rotorua Marketing  
Emily Schuster and Julia Rika entertain tourists. Courtesy of Destination Rotorua Marketing  
Raftabout, Kaituna River. Courtesy of Destination Rotorua Marketing

# Community Notices:



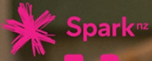
Rotorua Library Lego Club has been running since November 2016. Since Lego Club started we have had over 3000 children come in after school to play with super sized Lego set.

Lego Club allows children to collaboratively play with others while using our Lego set. Each club begins with a story then children can build whatever they please. Clubs are held once a month, there are currently eight clubs, on Monday, Tuesday and Saturday.

Lego Club is open to all children aged 5-11. All materials are provided and Lego Club is **FREE**. Each child attends Lego Club once monthly.

To register or find out more please visit  
[www.rotorualibrary.govt.nz](http://www.rotorualibrary.govt.nz)





# JUMP

## GIGS FOR THE KIDS

Spark Jump helps families get home broadband so students can learn online at home. It's for those with a child under 18 at home, with no current broadband connection. There's no contract or credit check required.

Suitable 4GB coverage is required as confirmed by the Spark Wireless Broadband address checker:

[www.spark.co.nz/what-matters/spark-jump](http://www.spark.co.nz/what-matters/spark-jump)



**Free modem**



**\$10 for 30GB**



**Top Up  
as you go**

Book in for a Spark Jump workshop at Rotorua Library Te Aka Mauri to get set up.

To book, visit the Stepping Up page on our website or ask our staff.

JAN	FEB	MAR	APR	MAY	JUN	JUL
-----	-----	-----	-----	-----	-----	-----

## LONG-TERM PROGRAMMES YEAR 1 – 10

Cubelets
Keva Block Mazes
mBots
Introducing Geothermal
Tarawera Te
Traditional Māori
Early Te Arawa
Settlers &
Amazing Race
Behind The Scenes

## LONG-TERM PROGRAMMES YEAR 11 – 13 NCEA

Tarawera Extreme Natural
History of Tourism Development
Describe and Promote a New Zealand Tourist

## CHANGING PROGRAMMES

Curriculum Key

	Bravehearts		Top Art	Māra Kai		Matariki
	Amazing Race			Truebridge and Technology		
				On Point		
				Te Arawa Journeys		
JAN	FEB	MAR	APR	MAY	JUN	JUL

Education programmes kindly supported by:



ROTORUA  
SETTLERS &  
STEAM MUSEUM

This booklet concept and design:

© Arts and Culture Education Department. Rotorua Lakes Council

# Long-Term & Changing Programmes 2019

AUG	SEP	OCT	NOV	DEC	
Robot Cubes					Y 1-4
And Animation					Y 3-8
101					Y 5-8
Environments					Y 3-10
Maunga Tapu					Y 3-10
Tākaro (Games) - Horohopu					Y 3-8    Y 3-8
Games and Toys					Y 1-8
Steam					Y 1-10    Y 1-10
and Swim					Y 1-13    Y1-13
@ Offsite					Y 3-10
Events (Supports A.S: 91007)					L1 Geography
(Supports A.S: 91427)					L3 Geography
Destination — Rotorua (Supports U.S: 24733)					L2 Tourism
Science	Social Sciences	Visual Art	Technology	Physical Education	
<div style="border: 1px solid black; padding: 10px; display: inline-block;"> <p>More information on future exhibitions and programmes to follow in Term 2 2019</p> </div>					
AUG	SEP	OCT	NOV	DEC	

## PRICES

Rotorua Schools FREE

## TIMINGS

**Bookings for school groups are essential.**

Please book **4 — 6 weeks prior** to confirm your visit.

Session times range from

**1 — 2 hours**

(enquire at time of booking)

## TO MAKE A BOOKING:

**Online:** [rotoruumuseum.co.nz/education](http://rotoruumuseum.co.nz/education)

# FREE museum BUS

**\*\* BE SURE TO BOOK EARLY! BUS FUNDING IS ON A TERM BY TERM BASIS \*\***

Museum Bus kindly sponsored by



NGATI WHAKAUE  
EDUCATION ENDOWMENT  
TRUST BOARD

*Te Toro ihi Matauranga*



**ROTORUA  
LAKES COUNCIL**