

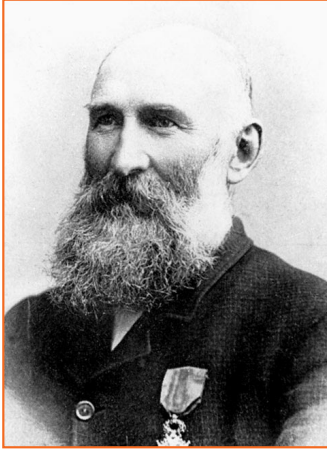
DID YOU KNOW?

MALFROY GEYSERS

GOVERNMENT GARDENS



ROTORUA
museum
Te Whare Taonga o Te Arawa
ART | CULTURE | HERITAGE



We live in an area surrounded by geothermal activity including a multiple of hot pools.

You could have walked past this Rotorua landmark a number of times but not known what it was.

It is the Malfroy Geysers located in the Government Gardens . In 1889 a French engineer Camille Malfroy worked out plans for a thermal system in the Government Gardens. It included a series of pipes to create artificial or fake geysers.

These manmade geysers first opened on Queen Victoria's birthday in May 1890.

FACTS

- There were three geysers which played up to 12 metre high.
- Over time the geysers were neglected, pipes rusted and the water table lowered naturally so they were unable to play.
- Malfroy Road in Rotorua is named after Camille Malfroy.

CHALLENGE

Use lego, wooden blocks or draw your own system of geysers.

Please share with us your creations by posting it on our Facebook page Education at Rotorua Museum or sending a picture to: MuseumED@rotorualc.nz



ROTORUA
LIBRARY
TE AKA MAURI

ROTORUA
LAKES COUNCIL

Image Credit: Top left - Malfroy Geyser, Sanatorium grounds, Rotorua. Ref: 1/1-006484-G. Alexander Turnbull Library, Wellington, New Zealand. /records/22655941
Top right - Camille Malfroy. Collection of Rotorua Museum of Art and History, Te Whare Taonga o Te Arawa. Reference: CP 1053

WE WOULD
LOVE TO SEE
YOUR LEARNING!

Be in to win Lego™ when you tell us about what you did! **Click here** or visit

rotoruamuseum.co.nz/share