



ROTORUA museum

Te Whare Taonga o Te Arawa ART | CULTURE | HERITAGE



LEOTC EDUCATION PROGRAMMES

TERM 1 & 2 2022

Kia ora and welcome

After the upheaval of the past few months we would like to pass on our gratitude to those schools that have supported us and our programmes.

Level 2 has certainly provided challenges. We asked ourselves how can we still support schools and their learning in a safe way going forward?

Through a well thought out health and safety plan we found we can. We've shifted to delivering outreach to schools and implementing COVID safe practices in our teaching venues: Te Aka Mauri Rotorua Library, Te Rūnanga Tea House in the Government Gardens and the Rotorua Arts Village.

We were able to rebook the majority of those schools who were not able to visit because of the lockdown and we're fully booked for Term 4.

Because of this stringent plan we are confident we can move with ease across to the new Covid Protection Framework delivering our programmes effectively and safely.



Lizzie Marvally

We pause to farewell the director of Rotorua Museum Lizzie Marvally. Through her leadership our organisation has made great strides in the development of the Museum whilst closed. Lizzie showed passion and drive in her role especially as a strong supporter of rangatahi and tangatawhenua in Rotorua. We wish Lizzie and her whānau well for the future.

We are delighted that our māra kai has been planted for 2022. As always we are grateful to Kai Rotorua and in particular the ever knowledgeable Te Rangikaheke Kiripatea for his guidance. Helping us were students from Otonga Road Primary School who learnt about planting techniques from the past and the maramataka (Māori lunar calendar).

Our beautiful māra will be ready to harvest from 11 April to 14 May 2022, please see more details later in this booklet.

If we can be of any assistance or if you have questions about anything in this booklet please let us know.

Ngā manaakitanga,

The Rotorua Museum Education Team.



Emma Liley
*Museum Education
Lead*



**Taupopoki
George McLeod**
Education Coordinator



Kristina Joyce
Education Assistant



Rebecca Moore
*Education Coordinator
Visual Arts*



Jessica Cathro
*Digital Technology
Educator. Te Aka Mauri
Rotorua Library*

Programmes kindly
supported by:



ROTORUA SETTLERS & STEAM MUSEUM



Notices:

Arts Village Monday

Every Monday is now devoted to our visual arts programmes.

We have secured one of the studio spaces at the Rotorua Arts Village in order to deliver these sessions. More room, an ideal space for these hands-on programmes. Bring your students and have them learn new knowledge and new skills in the visual arts.

The **ARTS** VILLAGE

Local Curriculum

We will be proactively approaching schools asking where they are currently in the development of their local curriculum.

We'd love for you to share your local curriculum to help us develop programmes for our local school community. Please send to museumED@rotorualc.nz

For those of you familiar with our service you may know we currently hold a contract with the Ministry of Education through Learning Experiences Outside The Classroom (LEOTC).

The ministry has decided to change the funding model and has introduced a new initiative called **Enriching Local Curriculum (ELC)**. This is an exciting change for us as it affirms our decision that the majority of our current and future programmes should all have a strong link to Rotorua or Te Arawa.



Our Year In Pictures









Share with us how a Rotorua Museum programme made a difference to your student learning. We'd love to see what you did!

Email us at museumED@rotorualc.nz. We've received this amazing feedback from the Year 3 syndicate visit by Westbrook Primary School.

"The Year 3 Team did the 'Mixed Media Fun' class based on Māori Artworks. They discussed three artworks by local artists Thomas Hansen, Kylie Tiuka, and Anna Hayes. The children then heard the story and made their own interpretation of the waka sailed by Tamatekapua from Hawaiiki to Aotearoa."



"They used marbling, patterning and drawing to complete their pictures. Tamatekapua was a leader of the Te Arawa tribe. This was part of our enquiry about Maketū Beach."

He Kākano

Quick Glance

21 March - 8 April

Suitable for:

Middle Primary

Secondary
Y9-13

Senior Primary

Intermediate

Social Sciences

1 hr

Up to 30 students per session

Venue: Te Aka Mauri Rotorua Library

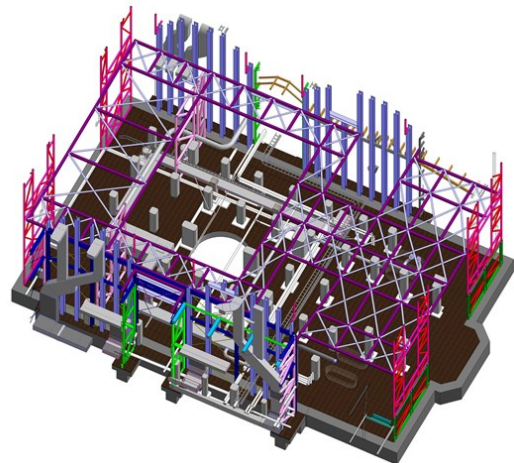


Teachers we need your help!

Due to closure, a whole generation of Rotorua tamariki don't have any memories of visiting Rotorua Museum - Te Whare Taonga o Te Arawa.

Come on a journey with our staff to explore what the museum was like in the past and learn about the special work going on behind the scenes to get it reopened.

During this one hour session, students will share with us their ideas and suggestions on what they would like to see in their new museum using fun and hands on activities.



The Beginings of Our New Whare Taonga

**BOOK
NOW**



This unique programme is a must-do for those teachers and rangatahi who are interested in having a say about their new museum, learning how a major building project comes together, as well as a look into the creative talents behind developing and delivering exhibitions.



We're Here To Help

In this booklet are a range of Rotorua Museum education programmes to choose from with a strong focus on local curriculum.

We are able to tailor these programmes to the specific learning outcomes and curriculum areas that you wish your tamāriki to focus on.

We can also create a new programme specific to your syndicates' learning. Please contact us so we can discuss possibilities further with you.

We require at least 8 - 10 weeks to develop these programmes so book early.

Please note our programmes also come with pre and post-visit material that give helpful suggestions for extended and enriched learning.

Māra Kai A Traditional Māori Garden



Quick Glance

12 April - 14 May 2022

Suitable for:

Junior Primary

Middle Primary

Secondary
Y 9-10

Senior Primary

Intermediate

Social Sciences

2 hrs

Up to 30 students per session

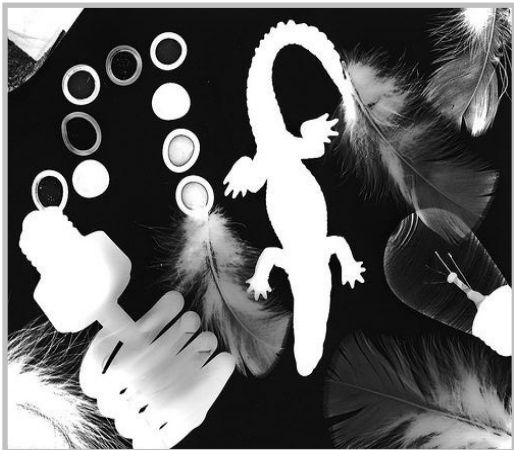
Our Place **LIMITED SESSIONS - BOOK NOW!**

Students will take part in a hands-on, thinking based session exploring the use of māra kai by early Māori.

They will critically examine types of kai (food) and gardening tools available in the past as well as understand the role that seasons and karakia (prayer) played in the success of crops.

Experiences will include working co-operatively in Rotorua Museum's own māra kai and participating in a range of tasks such as preparing soil, weeding, pest control and harvest of crops. The session will conclude with an opportunity to sample kumara and hue.

Sun Print Magic



Quick Glance

Available only on Monday

Suitable for:

Senior Primary

Intermediate

Visual Arts

1 ¾ hrs

Up to 30 students per session

Venue: Rotorua Arts Village

Come and create sun prints inspired by Mark Adams and local photographer Riley Claxton.

Investigate how artists can encourage us to see a place like Rotorua that we know well in a new and unique way.

Through fun activities involving discussion, drama and iPads students will learn explore steps to create an effective photograph.

They will learn to create an image considering composition and negative space while using old photography techniques which don't require the use of a camera.

Mixed Media Fun: Māori Artworks



Quick Glance

Runs All Year

Suitable for:

Junior Primary

Middle Primary

Secondary
Y 9-10

Senior Primary

Intermediate

Visual Arts

2 hrs

Up to 30 students per session

Venue: Te Aka Mauri Makerspace

What makes the work of Māori artists stand out from other artworks?

Students will explore works made by Rotorua artists. The artists will include not only painters but those working in media such as whakairo (carving), and raranga (weaving).

Following in the footsteps of these contemporary artists students will be involved in the process of creating their own innovative and meaningful artwork.

Students will consider how Māori art often shows:

- Māori knowledge (mātauranga Māori)
- Balance with, not dominance over nature
- Māori are people of the land (tangata whenua)
- Importance of ancestors (tūpuna)

Abstract Printmaking



Quick Glance

Available only on Monday

Suitable for:

Middle Primary

Secondary
Y 9-10

Senior Primary

Intermediate

Visual Arts

1 ¾ hrs

Up to 30 students per session

Venue: Rotorua Arts Village

Abstract art is a form of visual language. In this hands on programme students will explore the world of abstract art. They will learn to appreciate it while examining the design elements and principles used (colour, line and texture).

Students will contribute to thinking based discussions and activities around examples of New Zealand and international abstract paintings.

They will have fun creating one or more abstract mono prints while experimenting using a variety of mark making techniques and utilising a real printing press.

Land of the Taniwha



Quick Glance

Runs All Year

Suitable for:

Junior Primary

Middle Primary

Secondary
Y 9-10

Senior Primary

Intermediate

Visual Arts and Social Sciences

2 hrs

Up to 30 students per session

Our Place or Your School (Outreach)

Where can we find the taniwha who reside in and near Rotorua? Students will listen to stories of a taniwha special to their area and locate their dwelling places in relation to their kura (school).

We will consider why taniwha are there and how knowledge of their presence was important to people in the past and is still relevant today.

They will investigate what taniwha look like and present their findings through practical artwork.

NB: We can adapt this programme to suit the area in which your school is situated

.5 Cultural Conventions



Quick Glance

Runs All Year

Suitable for:

NCEA

**Secondary
Y 12**

Visual Arts

1 - 1.5 hrs

Up to 30 students per session

Our Place or Your School (Outreach)

Cultural Conventions: Hand painted photographs
Supports Achievement Standard: 91325

A fun 1hr workshop to learn and practice the traditional techniques of hand painted photographs. During the workshop the students will also be involved in activities to understand the context for traditional hand painted photographs and in particular how they show personal/cultural identity.

NB: This workshop is part of a fuller cultural conventions unit which will be given to the teacher.

Heroes and Electrical Circuits



Quick Glance

Terms 1 and 2 ONLY

Suitable for:

Middle Primary

**Secondary
Y 9-10**

Senior Primary

Intermediate

Science and Health/Physical Education

2 hrs

Up to 30 students per session

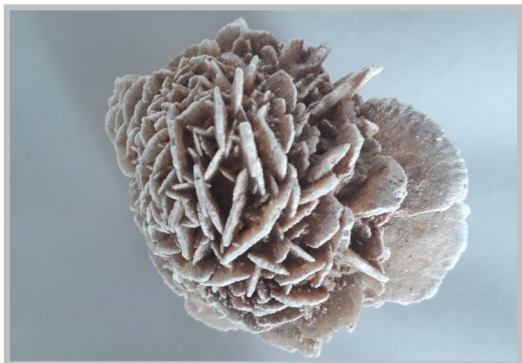
Our Place

What makes someone a hero? Why are heroes important? What can we learn from them? Can we be like them?

In this fun programme we dive into these questions through interactive activities involving problem solving and collaboration.

Through these activities students will also learn about electrical circuits and will create a wire buzz light game inspired by a local hero to take back to school.

Do You See What I See?



Quick Glance

Runs All Year

Suitable for:

Junior Primary

Middle Primary

Secondary
Y 9-10

Senior Primary

Intermediate

Visual Arts and Science

1.5 - 2 hrs

Up to 30 students per session

Our Place

In this discovery programme students will be both scientists and artists.

They will learn not to jump to conclusions by taking time to notice and therefore learn about the value of observation.

They will have the opportunity to extend on initial discoveries by working collaboratively and using techniques such as drawing, labelling and using magnifying glasses.

Exploring Geothermal Environments



Quick Glance

Runs All Year

Suitable for:

Middle Primary

Secondary
Y 9-10

Senior Primary

Intermediate

Science

2hrs

Up to 30 students per session

Our Place

Be a scientist and discover how geothermal activity is produced and why it occurs in the Rotorua region.

This hands-on session will have children observing, testing, recording, comparing and analysing geothermal activity in and around Sulphur Point and the Government Gardens.

TARAWERA LEGACY PACKAGE



Quick Glance

Runs All Year

Suitable for:

Junior Primary

Middle Primary

**Secondary
Y 9-10**

Senior Primary

Intermediate

Social Sciences or Science

Up to 60 students per session

Our Place, Whakarewarewa & Buried Villages

The 1886 Mt Tarawera eruption can be explored in depth by visiting three Rotorua attractions.

Students will visit sites relevant to the eruption. Te Wairoa was the main village near Mt Tarawera during the eruption. Today it survives in a new form as the Buried Village.

The Whakarewarewa Thermal Village is where many survivors of the eruption rebuilt their lives and families.

This package is completed with a curriculum linked programme delivered by a Rotorua Museum educator.

Special conditions and fees apply.
Please see our website for more information:
rotoruumuseum.co.nz/learning

Prices until 30.09.23	Primary	Secondary	Adults
Bay of Plenty Schools	\$19.50	\$27.00	\$50.00
NZ Schools	\$20.50	\$29.00	\$50.00

One adult free per 10 students on the general package.
Concert available at Whakarewarewa Village at additional cost.
\$10.00 per person (5-15 years)
\$20.00 per person (16 years +)



THE LIVING MĀORI VILLAGE

Whakarewarewa

**BURIED
VILLAGE**
of TE WAIROA

TARAWERA TE MAUNGA TAPU MUSEUM ONLY OPTION

Ngā Haerenga o Te Arawa Te Arawa Journeys



Quick Glance

Runs All Year

Suitable for:

Junior Primary

Middle Primary

Secondary
Y 9-10

Senior Primary

Intermediate

Social Sciences or Science

1.5 - 2hrs

Up to 60 students per session

Our Place or Your School (Outreach)

Using museum collection items, photographs and film, students will identify why we have volcanoes such as Tarawera in our region and how tourism developed at Te Wairoa in the early 1880s.

They will explore how the 1886 eruption affected the lives of people, changed the landscape and predict the likelihood of future eruptions.

Please let us know your specific learning outcomes so we can adapt our programme to suit.

Quick Glance

Runs All Year

Suitable for:

Junior Primary

Middle Primary

Secondary
Y 9-10

Senior Primary

Intermediate

Social Science and Digital Technology

1.5 - 2hrs

Up to 30 students per session

Our Place or Your School (Outreach)

Step back in time to rediscover one well known Te Arawa journey. Examine the difference between a holiday and a journey, explore with hands on items what was required to survive on a journey long ago. Then have a go at creating unplugged coding instructions to replicate how the chosen journey progressed.

Teachers choose one of the following to focus on:

- 1) Ihenga and the Discovery of Rotoiti/ Rotorua
- 2) Ngātoroirangi and the Coming of Fire
- 3) Hatupatu and Kurungaituku (Birdwoman)
- 4) Tamatekapua and the Voyage From Hawaiiiki

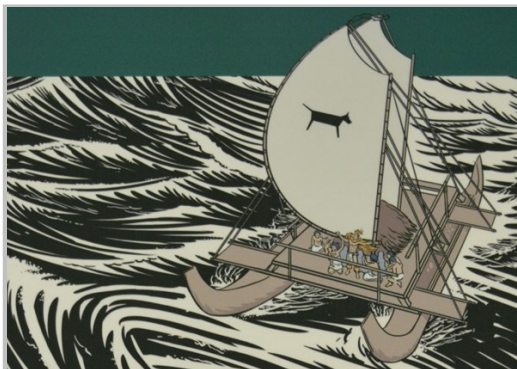
Talk to us if you have other journeys in mind.



ROTORUA museum

Te Whare Taonga o Te Arawa ART | CULTURE | HERITAGE

Discovering Aotearoa



Quick Glance

Runs All Year

Suitable for:

Middle Primary

Secondary
Y 9-10

Senior Primary

Intermediate

Social Sciences

1.5 - 2 hrs

Up to 30 students per session

Our Place

How did early Te Arawa tūpuna (ancestors) like Tamatekapu and Ngātoroirangi find their way across the Pacific Ocean to a new land?

Students will find out about the navigation skills required not only to journey to Aotearoa, but how numerous trips were made back and forth from Hawaiiki.

This programme looks at why early explorers came to Aotearoa, the events that happened when they arrived and why they stayed.

Learn about the story of taonga associated with these early travels and people attached to them.

Early Te Arawa Games and Toys



Quick Glance

Runs All Year

Suitable for:

Junior Primary

Middle Primary

Senior Primary

Intermediate

Social Sciences and Technology

1.5 hrs

Up to 30 students per session

Our Place or Your School (Outreach)

Have fun playing traditional games and trying toys enjoyed by early Māori children in Aotearoa.

Students will compare games and toys of the past to those used today.

They will decorate their own pūrerehua (bullroarer) to take home afterwards.



Rotorua's Treaty?

The Township Agreement



Quick Glance

Available Term 2

Suitable for:



Secondary
Y 9-10

Senior Primary

Intermediate

Social Science

1.5 - 2hrs

Up to 30 students per session

Our Place

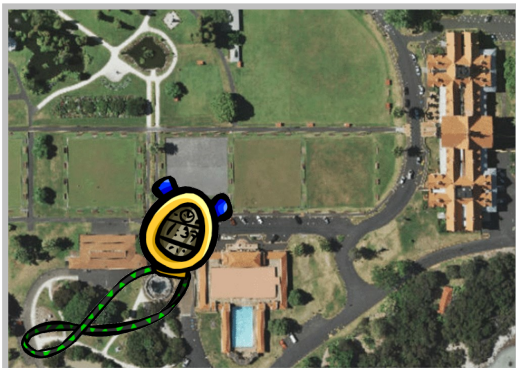
The Township Agreement signed on November 25th 1880 can be seen as the genesis of the modern day city of Rotorua.

Students will learn about differing perspectives around land and natural resources. They will come to understand what events had led up to the signing of the Fenton Agreement, and what went wrong afterwards.

They will have the opportunity to critically examine relevant items from the museum's collection, interpret the past decisions and actions, and imagine how museum visitors in the future might understand this important agreement.

Amazing Race

& Swim



Quick Glance

Runs All Year

Suitable for:

Junior Primary

Middle Primary

Secondary
Y 9-13

Senior Primary

Intermediate

Social Sciences and Physical Education

1.5 - 2 hrs

Up to 45 students per session

Our Place

Government Gardens is not just a pretty place to go for a walk!

Uncover the mysteries of this special historic place, race against others in an Amazing Race to find clues, meet Mr Malfroy and Queen Victoria along the way.

Combine this with an optional swim at the Polynesian Spa for a fun trip out.

Special conditions and fees apply. Polynesian Spa swim cost \$8.00 per person for students and adults.



POLYNESIAN SPA

Te Paepaehakumanu

The Government Gardens



Quick Glance

Runs All Year

Suitable for:

Junior Primary

Middle Primary

Secondary
Y 9-10

Senior Primary

Intermediate

Social Sciences

2 hrs

Up to 30 students per session

Our Place

Students will be outside and work as a team to solve clues, sketch, research, record answers, as well as report back with findings to show that *Te Paepaehakumanu* (the Government Gardens) is a significant historical site and today is home to a variety of Te Arawa stories, memorials, buildings, natural features and sculpture special to Rotorua.

This includes trying small amounts of geothermal mud.

Weather dependant.

iPads or tablets for photography required.
Enquire at time of booking.

Ngā Kōrero o Te Kura

School Stories



Quick Glance

Runs All Year

Suitable for:

Middle Primary

Secondary
Y 9-10

Senior Primary

Intermediate

Social Sciences

2 hrs

Up to 30 students per session

Our Place

What's your school story?

Uncover the unique history of the area your school is situated in.

Explore with the museum education team using taonga, landmarks, maps, objects or photographs what happened in the past and who were the people or events that contributed to change.

Minimum of two or three classes required.

Must book 6 - 8 weeks prior.

ANZAC Day



Ake! Ake! 28 Māori Battalion



Quick Glance

Runs All Year

Suitable for:

Middle Primary

Secondary
Y 9-10

Senior Primary

Intermediate

Social Sciences

1.5 hrs

Up to 30 students per session

Our Place or Your School (Outreach)

World War One presented in a fun and easy way for your students to understand.

How did one seemingly small incident start a chain of events that lead to one of the largest conflicts in world history?

Why was this event called the Great War and how did it bring about national pride and independence in New Zealand?

In this programme students will explore the stories of soldiers and objects from the museum collection. They will gain an understanding of what was going on in the world at that time and how NZ became involved in this global event.

Quick Glance

Runs All Year

Suitable for:

Middle Primary

Secondary
Y 9-10

Senior Primary

Intermediate

Social Sciences

1.5 hrs

Up to 30 students per session

Our Place or Your School (Outreach)

Students will investigate who the 28 Māori Battalion were.

They will come to understand where they came from, where they went and what happened to them during World War Two.

This programme includes critically examining images of the time as well as hands-on activities looking at objects similar to those used by soldiers.

St Mary MacKillop



Quick Glance

Runs All Year

Suitable for:

Middle Primary

Secondary
Y 9-13

Senior Primary

Intermediate

Social Sciences

2 hrs

Up to 30 students per session

Our Place

Mary MacKillop (St Mary of the Cross) the venerated saint of Australasia came to New Zealand on a few occasions and visited Rotorua in 1902.

Mackillop sought to heal her ailments using the geothermal waters of this area and her visit was well documented.

In this programme students will retrace Mary MacKillop's footsteps. They'll figure out who she was, why she came here, what she did for our town and why she's special to Rotorua.

This two hour programme requires a moderate amount of walking and we ask you book 6 - 8 weeks prior.
Special conditions apply.

Steam and Settlers Museum



Quick Glance

Runs All Year

Suitable for:

Junior Primary

Middle Primary

Secondary
Y 9-10

Senior Primary

Intermediate

Social Sciences

2hrs

Up to 60 students per session

Rotorua Steam and Settlers Museum

Rotorua Museum, in conjunction with the Rotorua Steam and Settlers Museum, are proud to offer this hands-on programme for students.

Investigate what everyday life was like in the late 1880s to early 1900s. Students will experience the homes, shops and chores common to the time.

Objects and technologies from the period will be used to make butter, do the washing and play early pioneer games.

Special conditions and fees apply.
Cost: \$5 per student (includes train ride)
\$5 per accompanying adult. Teachers free of charge.

Payment is to be made at the Steam and Settlers Museum on the day.

Hidden Treasures



Quick Glance

Runs All Year

Suitable for:

Middle Primary

Secondary
Y 9-10

Senior Primary

Intermediate

Social Sciences or Visual Arts

2 hrs

Up to 30 students per session

Our Place

Students will gain an insight into what items are accepted into the collection and why.

They will see what happens behind the scenes, explore items that have never been on display before and ask questions of our staff who work with these fascinating objects every day.

This session concludes with a fun hands-on “be a curator” activity where students will apply and use the collection criteria they have learnt whilst visiting.

Viewing of particular taonga or collection items available on request e.g: Pūkāki, Horoirangi or Te Murirangaranga (Tūtaneikai’s flute).

Tarawera Extreme Natural Events



Quick Glance

Runs All Year

Suitable for:

NCEA

Secondary
Y 11

NCEA Level 1

1.5 hrs

Up to 70 students per session

Our Place

Supports achievement standard 91007

Students will be given an introductory talk about extreme natural events focusing specifically on the 1886 Mt Tarawera eruption and the Rotorua landscape. This will summarise the processes that produce volcanic eruptions, the sequence of events that occurred during the Tarawera eruption and how the environment was changed as a result.

Staff will talk about the effects the eruption had on people and the environment, both short and long term and, what may happen to the mountain in the future.

Students will then partake in hands-on and inquiry based activities involving rocks and historic images from the museum collection.

Describe and Promote A New Zealand Tourist Destination — Rotorua



Tourism Development In Rotorua



Quick Glance

Runs All Year

Suitable for:

NCEA

Secondary
Y 12/13

NCEA Level 2-3

1.5 hrs

Up to 70 students per session

Our Place

Quick Glance

Runs All Year

Suitable for:

NCEA

Secondary
Y 13

NCEA Level 1

1.5 hrs

Up to 70 students per session

Our Place

Supports unit standard 24733

Investigate and describe processes which contribute to the tourism sector. Guided by an educator, students will explore a brief history of tourism in Rotorua.

They will discover what attractions, experiences and special events are offered to visitors today and how these are promoted.

Students will have the opportunity to analyse statistical data about visitors to Rotorua as well as understand the effects tourism has socially, environmentally and economically.

Supports achievement standard 91427

A Cultural Process – Tourism Development

Students will receive an interactive, relevant and engaging talk while learning about tourism development.

This will summarise the birth of tourism at the Pink and White Terraces and the effects of the Mt Tarawera eruption. It will cover the diversification and advancement of the township and the attempts at catalytic development by the Government

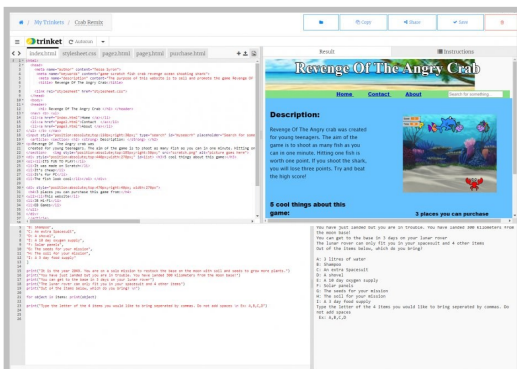
The talk will also explore the mass development phase and specialisation of tourism in recent years.

Staff will highlight the impact that social, political, economic, natural and technological elements have on the environment of Rotorua. This also includes the short term impacts of COVID-19.

Let's Get Coding

Robotics 101

(Edisons, Beebots and Lego™ Mindstorm)



Quick Glance

Runs All Year

Suitable for:

Junior Primary

Middle Primary

**Secondary
Y 9-10**

Senior Primary

Intermediate

Digital Technology NCEA L 1, 2 & 3

2 hrs

Up to 30 students per session

Our Place or Your School (Outreach)

Quick Glance

Runs All Year

Suitable for:

Junior Primary

Middle Primary

**Secondary
Y 9-10**

Senior Primary

Intermediate

Digital Technology

2 hrs

Up to 20-30 students per session

Our Place or Your School (Outreach)

Whether it's an brand new introduction for primary students or a refresh for high school students we can tailor our Let's Get Coding programme to the age and experience of your students.

During this programme students will create at least one complete working game using an application appropriate to their age and experience (e.g. Scratch, Python, HTML and CSS).

For senior high school students this is a great way to reintroduce them to skills prior to starting their programming standard.

For junior primary we can use Scratch Jr (you will need to bring along your own iPad/tablets with the app downloaded) and runs for 1 hour only. We can supply up to 10 devices but students work best on 1:1 devices

Students will get a follow up project to takeaway with them and teachers can take away two additional projects.

An introduction to the wonderful world of robotics.

Students will programme their robot to complete a series of tasks, including drag race, maze and line following.

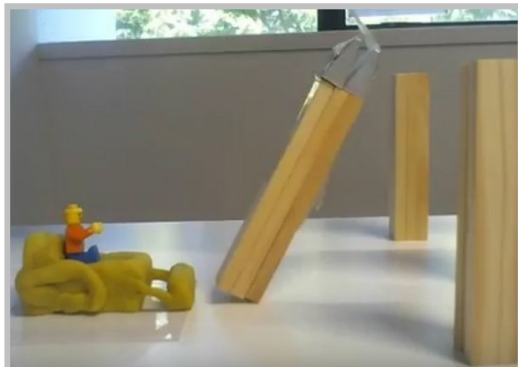
We can tailor this programme to your students' level of experience with more experienced students linking into the Robocup Jnr competition.

We also offer this for junior primary using beebots and additionally as a Lego Mindstorm build.

TOMPKINS
WAKE

The Computer Suite has been made possible thanks to Te Aka Mauri founding resource funder BayTrust and programmes partners Unison and Tompkins Wake.

Making Movie Magic



Quick Glance

Runs All Year

Suitable for:

Junior Primary

Middle Primary

Secondary
Y 9-10

Senior Primary

Intermediate

Digital Technology

1.5 hrs

Up to 30 students per session

Our Place or Your School (Outreach)

Computational Thinking Progress Outcome 1 and 2

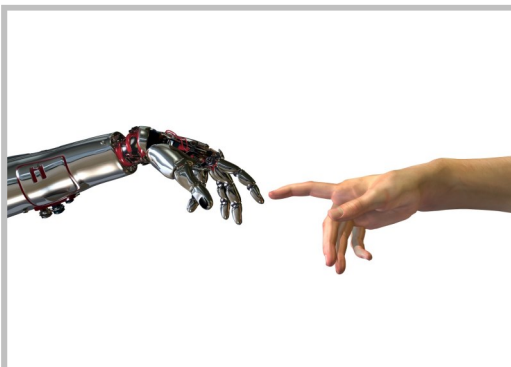
Making movie magic puts your students in the director's chair.

Using our topic for the term, students will create a storyboard and a stop motion animation movie. They will learn about some of the main jobs in the animation industry.

The Makerspace has been made possible thanks to Te Aka Mauri founding resource funder BayTrust and programmes partner Unison.

Human Computer Interactions

NCEA Level 1 Digital Technology External



Quick Glance

Runs All Year

Suitable for:

NCEA

Secondary
Y 11

Digital Technology

2 hrs

Up to 30 students per session

Our Place or Your School (Outreach)

Computational Thinking Progress Outcome 1 and 2

Achievement Objective: Demonstrate understanding of human computer interaction.

Looking to introduce your students to the Level 1 external, or maybe cement their learning?

Our *Human Computer Interactions* programme explores Neilson's Heuristics, user interface design and prepares students for the Level 1 NCEA External AS91886.

Programme By Year Level

	Primary		
	Junior	Middle	Senior
He Kakano—The Beginings of Our New Whare Taonga			
Tarawera - Social Science			
Tarawera - Science			
Tarawera Legacy Package			
Exploring Geothermal Environments			
Do You see What I See?			
Te Arawa Journeys			
Early Te Arawa Games			
Te Paepaehakumanu - The Government Gardens			
Amazing Race and Swim			
Hidden Treasures			
Discovering Aotearoa			
Ngā Kōrero o Te Kura - School Stories			
Mary MacKillop			
Steam and Settlers Museum			
Mixed Media Fun: Māori Artworks			
Land of the Taniwha			
Abstract Printmaking			
Heroes and Electrical Circuits			
Sun Print Magic			
.5 Cultural Conventions			
Let's Get Coding			
Robotics 101			
Making Movie Magic			
Human Computer Interactions			
Tarawera Extreme Natural Events			
Describe and Promote A New Zealand Tourist Destination - Rotorua			
Tourism Development In Rotorua			

Programmes kindly
supported by:



Intermediate—Secondary

Programme Concept Alignment

Yr 7 - 8	Yr 9 - 10	Yr 11+	
			Identity, Change, Community
			Change
			Change, Force
			Change, Force
			Sustainability, Change, Force, Systems
			Exploration, Community, Patterns
			Identity, Conflict, Exploration
			Sustainability, Change
			Identity, Change, Conflict
			Identity, Community
			Sustainability, Systems
			Identity, Conflict, Exploration
			Identity, Exploration, Community
			Identity, Community
			Change, Force, Exploration,
			Exploration, Community, Patterns, Identity
			Exploration, Patterns, Identity, Community
			Exploration, Structure, Systems, Community
			Identity, Exploration, Systems
			Exploration, Change
			Exploration, Change
			Identity, Sustainability, Exploration, Structure, Systems, Community
			Exploration, Structure, Systems, Community
			Exploration, Community
			Exploration, Structure, Systems, Community
			Change, Force, Systems
			Sustainability, Change
			Sustainability, Change

TIMINGS

Bookings for school groups are essential.

Please book **4 — 6 weeks prior** to confirm your visit.

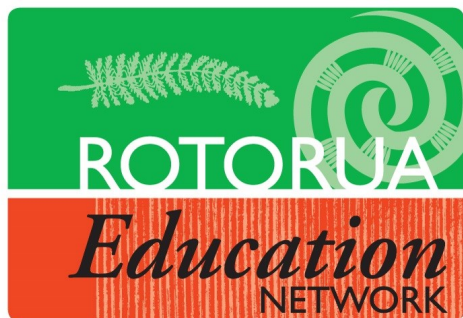
Session times range from **1 — 3 hours**
(enquire at time of booking)

TO MAKE A BOOKING:

Please call the **Rotorua Education Network** for more details
including prices and availability

07 350 2154

or visit rotorua-education.co.nz



What is the Rotorua Education Network (REN)?

It's a one stop shop for teachers all neatly packaged into one payment, doing away with the hassle of booking and paying for each venue you visit. Each attraction or service provides competitive rates to the REN which will mean savings for your group.

The REN can organise itineraries big or small specific to your needs. Bookings are arranged for all activities, accommodation and even transport if required.

