

TE WHARE TAONGA O TE ARAWA

ROTORUA museum

ENRICHING LOCAL CURRICULUM

Through Education Programmes



**ROTORUA
museum**

Te Whare Taonga o Te Arawa
ART | CULTURE | HERITAGE

**Term 1& 2
2024**

Years 9 - 13
Rotorua
Secondary
Schools

KIA ORA WELCOME

Included in this booklet is information pertaining to our programmes on offer to schools.

We ask you to peruse this booklet and identify how our programmes can complement your students' learning. We are open to customising our programmes to align with your learning objectives.

For information on booking please see page 18 of this booklet.

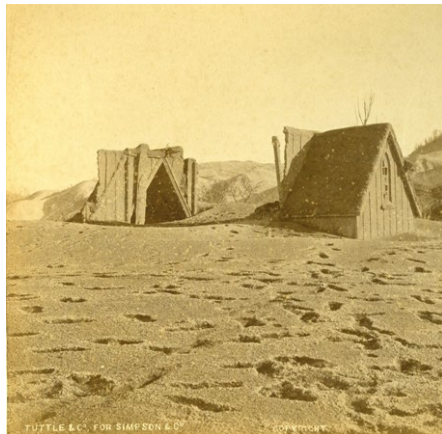
Ngā manaakitanga
Rotorua Museum Education Team
Taupopoki George McLeod
Rebecca Moore
Kristina Joyce

 rotoruamuseum.co.nz
 [rotoruamuseumeducation](https://www.facebook.com/rotoruamuseumeducation)



ROTORUA
museum
Te Whare Taonga o Te Arawa
ART | CULTURE | HERITAGE

TARAWERA EXTREME NATURAL EVENTS



Level: Secondary

Subjects: Geography - NCEA Level 1

Duration: 1.5 Hours
Up to 30 students per session

Venue: Te Rūnanga Tea House

Supports achievement standard 91007

Students will be given an introductory talk about extreme natural events, focusing specifically on the 1886 Mt Tarawera eruption and the Rotorua landscape.

This will summarise the processes that produce volcanic eruptions, the sequence of events that occurred during the Tarawera eruption and how the environment was changed as a result.

Staff will talk about the effects the eruption had on people and the environment, both short and long term, and what may happen to the mountain in the future.

Students will then partake in hands-on and inquiry based activities involving rocks and historic images from the Museum collection.

EIGHTEEN TWENTY THREE WARFARE FROM THE NORTH



Level: Secondary

Subjects: History - NCEA Level 1

Duration: 1.5 Hours
Up to 30 students per session

Venue: Rotorua Library, Te Aka Mauri

Using a range of hands-on, minds-on activities (including maps, objects and taonga) students will explore the factors which caused the invasion of Mokoia Island in 1823.

What happened during that event and what were the consequences afterwards for both Te Arawa and Ngāpuhi?

Students will examine not only the past but how this event is perceived by both iwi today.

This programme is delivered by our educator Taupopoki George McLeod (Ngāti Whakaue, Tūhourangi) and is a valuable resource when wanting to understand the events that occurred.

TOURISM DEVELOPMENT IN ROTORUA



Level: Secondary

Subjects: Geography - NCEA Level 3

Duration: 1.5 Hours

Up to 30 students per session

Venue: Te Rūnanga Tea House

Supports achievement standard 91427 A Cultural Process – Tourism Development

Students will receive an interactive, relevant and engaging talk while learning about tourism development.

This will summarise the birth of tourism at the Pink and White Terraces and the effects of the Mt Tarawera eruption. It will cover the diversification and advancement of the township and the attempts at catalytic development by the Government.

The talk will also explore the mass development phase and specialisation of tourism in recent years.

Staff will highlight the impact that social, political, economic, natural and technological elements have on the environment of Rotorua. This also includes the short term impacts of COVID-19.

DISCOVERING AOTEAROA



Level: Junior (primary), Middle (primary)
Senior (primary), Intermediate,
Secondary

Subjects: Social Science – Aotearoa
History Curriculum

Duration: 1.5 - 2 Hours

Up to 30 students per session

Venue: Rotorua Library, Te Aka Mauri

How did early Te Arawa tūpuna (ancestors) like Tamatekapua and Ngātoroirangi find their way across the Pacific Ocean to a new land?

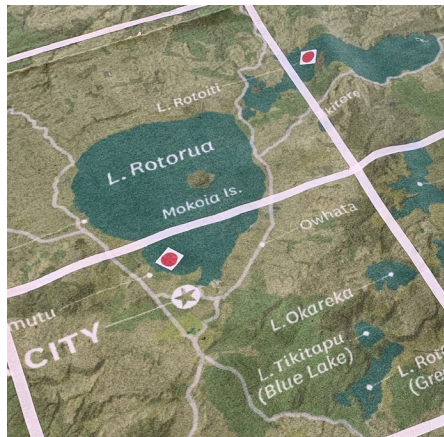
Students will find out about the skills required not only to journey to Aotearoa, but how numerous trips were made back and forth from Hawaii.

This programme looks at why early explorers came to Aotearoa, the events that happened when they arrived and why they stayed.

A great programme to teach the big idea Māori history is the foundational and continuous history of Aotearoa New Zealand.



NGĀ HAERENGA O TE ARAWA TE ARAWA JOURNEYS



Level: Junior (primary), Middle (primary), Senior (primary), Intermediate, Secondary

Duration: 1 - 2 Hours
Up to 30 students per session

Venue: Rotorua Library, Te Aka Mauri

Step back in time to rediscover one well known Te Arawa journey. Examine the difference between a holiday and a journey. Explore with hands-on items what was required to survive on a journey long ago.

Then have a go at creating unplugged coding instructions to replicate how the chosen journey progressed.

Teachers choose one of the following journeys to focus on:

- 1 Ihenga and the Discovery of Rotoiti/Rotorua
- 2 Ngātoroirangi and the Coming of Fire
- 3 Hatupatu and Kurungaituku (Birdwoman)
- 4 Tamatekapua and the Voyage from Hawaiiki

Talk to us if you have other journeys in mind.

NGĀ KŌRERO O TE KURA



Level: Middle (primary), Senior (primary) Intermediate, Secondary

Subjects: Social Science - Aotearoa History Curriculum

Duration: 1.5 Hours
Up to 30 students per session

Venue: Te Rūnanga Tea House

What's your school story?

Uncover the unique history of the area your school is situated in.

Explore with the museum education team using taonga, landmarks, maps, objects or photographs what happened in the past and who were the people or events that contributed to change.

Minimum of two or three classes required. Must book 6 - 8 weeks prior.

EARLY TE ARAWA GAMES



Level: Junior (primary), Middle (primary)
Senior (primary), Intermediate,
Secondary

Subjects: Social Science – Aotearoa
History Curriculum

Duration: 1.5 Hours
Up to 30 students per session

Venue: Te Rūnanga Tea House

Resource Fee: \$2 per student

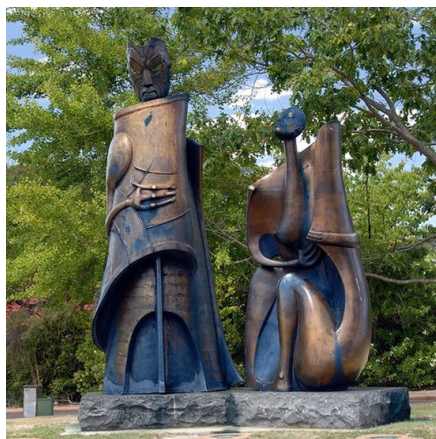
Have fun playing traditional games and trying toys enjoyed by early Māori children in Aotearoa.

Students will compare games and toys of the past to those used today.

They will decorate their own pūrerehua (bullroarer) to take home afterwards.

This programme is perfect for junior and middle school primary students with a high level of hands-on engagement.

TE PAEPAEHAKUMANU THE GOVERNMENT GARDENS



Level: Junior (primary), Middle (primary)
Senior (primary), Intermediate,
Secondary

Subjects: Social Science – Aotearoa
History Curriculum

Duration: 1.5 Hours
Up to 30 students per session

Venue: Te Rūnanga Tea House

Students will be outside and work as a team to solve clues, sketch, research, and record answers. Then they will report back with findings to show that Te Paepaehakumanu (the Government Gardens) is a significant historical site and today is home to a variety of Te Arawa stories, memorials, buildings, natural features and sculptures special to Rotorua.

This includes trying small amounts of geothermal mud on their skin.

Weather dependant.

iPads or tablets for photography required.
Enquire at time of booking.

AMAZING RACE



Level: Junior (primary), Middle (primary)
Senior (primary), Intermediate,
Secondary

Subjects: Social Science – Aotearoa
History Curriculum

Duration: 1.5 Hours
Up to 30 students per session

Venue: Te Rūnanga Tea House

Government Gardens is not just a pretty place to go for a walk!

Uncover the mysteries of this special historic place, race against others in an Amazing Race to find clues, meet Rangitihi a renowned Te Arawa tupuna (ancestor) and Queen Victoria along the way.

HIDDEN TREASURES



Level: Middle (primary), Senior (primary),
Intermediate, Secondary

Subjects: Science, Visual Art

Duration: 2 Hours
Up to 30 students per session

Venue: Rotorua Museum Offsite Facility

Students will gain an insight into what items are accepted into the collection and why.

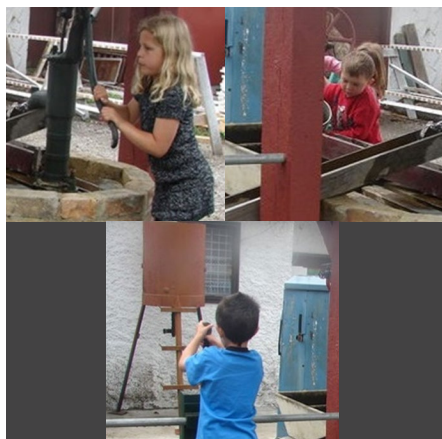
They will see what happens behind the scenes, explore items that have never been on display before and ask questions of our staff who work with these fascinating objects every day.

This session concludes with a fun hands-on “be a curator” activity, where students will apply and use the collection criteria they have learnt whilst visiting.

Viewing of particular taonga or collection items available on request.



PIONEER DAYS



Level: Junior (primary), Middle (primary), Senior (primary), Intermediate, Secondary

Subjects: Social Science – Aotearoa History Curriculum

Duration: 2 Hours
Up to 30 students per session

Venue: Rotorua Steam and Settlers Museum

Rotorua Museum, in conjunction with the Rotorua Steam and Settlers Museum, are pleased to offer this hands-on programme for students.

Investigate what everyday life was like in the late 1880s to early 1900s. Students will experience the homes, shops and chores common to the time.

Objects and technologies from the period will be used to make butter, do the washing and play early pioneer games.

Special conditions and fees apply.

Cost: \$5 per student, adults and teachers free of charge

Payment is to be made at the Steam and Settlers Museum on the day.

ANZAC DAY



Level: Middle (primary), Senior (primary), Intermediate, Secondary

Subjects: Social Science – Aotearoa History Curriculum

Duration: 1.5 Hours
Up to 30 students per session

Venue: Rotorua Library, Te Aka Mauri

World War One presented in an easy way for your students to understand.

How did one seemingly small incident start a chain of events that lead to one of the largest conflicts in world history?

Why this event was called the Great War? How did it bring about national pride and independence in Aotearoa New Zealand?

In this programme students will explore the stories of soldiers and objects from the museum collection.

They will gain an understanding of what was going on in the world at that time and how New Zealand became involved in this global event.

AKE! AKE! 28 MAORI BATTALION



Level: Middle (primary), Senior (primary)
Intermediate, Secondary

Subjects: Social Science – Aotearoa
History Curriculum

Duration: 1.5 Hours
Up to 30 students per session

Venue: Rotorua Library, Te Aka Mauri

Students will investigate who the 28 Māori Battalion were.

They will come to understand where they came from, where they went and what happened to them during World War Two.

This programme includes critically examining images of the time as well as hands-on activities looking at objects similar to those used by soldiers.

TARAWERA LEGACY



Level: Junior (primary), Middle (primary)
Senior (primary), Intermediate,
Secondary

Subjects: Social Science – Aotearoa
History Curriculum

Duration: Varies
Up to 60 students per session

Venue: Te Rūnanga Tea House

The 1886 Mt Tarawera eruption can be explored in depth by visiting three Rotorua attractions.

Students will visit sites relevant to the eruption. Te Wairoa was the main village near Mt Tarawera during the eruption. Today it survives in a new form as the Buried Village.

The Whakarewarewa Living Māori Village is where many survivors of the eruption rebuilt their lives and families.

This package is completed with a curriculum linked programme delivered by a Rotorua Museum educator.

Prices available on application or see our website for more information:

 rotoruamuseum.co.nz/learning

TARAWERA TE MAUNGA TAPU



Level: Junior (primary), Middle (primary) Senior (primary), Intermediate, Secondary

Subjects: Social Science – Aotearoa History Curriculum, Science

Duration: 1.5 Hours
Up to 60 students per session

Venue: Te Rūnanga Tea House

Using museum collection items, film and photographs, students will identify why we have volcanoes such as Tarawera in our region and how tourism developed at Te Wairoa in the early 1880s.

They will explore how the 1886 eruption affected the lives of people, changed the landscape and look at how to predict the likelihood of future eruptions.

Please let us know your specific learning outcomes so we can adapt our programme to suit.

EXPLORING GEOTHERMAL ENVIRONMENTS



Level: Junior (primary), Middle (primary) Senior (primary), Intermediate, Secondary

Subjects: Science

Duration: 2 Hours
Up to 30 students per session

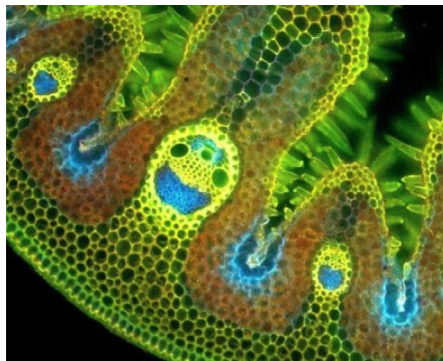
Venue: Te Runanga Tea House

Be a scientist and discover how geothermal activity is produced and why it occurs in the Rotorua region.

This hands-on session will have children observing, testing, recording, comparing and analysing geothermal activity in and around Sulphur Point and the Government Gardens.



DO YOU SEE WHAT I SEE



Level: Junior (primary), Middle (primary)
Senior (primary), Intermediate,
Secondary

Subjects: Science, Visual Art

Duration: 2 Hours
Up to 30 students per session

Venue: Rotorua Library, Te Aka Mauri

Find hidden secrets all around us by taking time to really notice and observe. In this discovery programme students will be both scientists and artists.

They will learn to take time and listen to the ideas of others when observing objects.

They will have the opportunity to extend on initial discoveries by working collaboratively and using techniques such as printing/ rubbing, labelling and using magnifying glasses.

I LIVE IN A CALDERA



Level: Junior (primary), Middle (primary)
Senior (primary), Intermediate,
Secondary

Subjects: Science, Visual Art

Duration: 2 Hours
Up to 30 students per session

Venue: Te Rūnanga Tea House

Resource Fee: \$3 per student

Available from Term 2 onwards

This sustainability programme opens students' eyes to Rotorua's natural treasures and environment.

Students will learn that their school sits in a caldera and that within that caldera is also our beautiful lake, Rotorua nui a Kahumatamomoe.

We will look at how the lake water is tested and what could be done to improve the lake quality.

Students will make a visual artwork celebrating the life within our lakes.

LET'S GET CODING



Level: Junior (primary), Middle (primary)
Senior (primary), Intermediate,
Secondary

Subjects: Digital Technology

Duration: 2 Hours
Up to 30 students per session

Venue: Rotorua Library, Te Aka Mauri

Whether it's a brand new introduction for primary students, or a refresh for high school students, we can tailor our Let's Get Coding programme to the age and experience of your students.

During this programme, students will create at least one complete working game using an application appropriate to their age and experience.

For junior primary we can use Scratch Jr (you will need to bring along your own iPad/tablets with the app downloaded) and runs for 1 hour only. We can supply up to 10 devices but students work best on 1:1 devices.

We provide additional projects to teachers to continue on after the visit.





MAKING A BOOKING

Cost: It is **FREE** for Rotorua Schools to attend these education programmes. Some programmes may have a small resource cost.

Booking Times: Bookings for schools are essential. Please book 8-10 weeks prior to confirm your visit. Also make sure you book your bus at the same time as bus funding is limited.

Session Times: 1-2 hours (enquire at time of booking)

Book: Fill in the online form:
🌐 rotoruamuseum.co.nz/education

Supplied: Upon email confirmation of booking we supply the following:

- Lesson outline
- RAMS
- Handy hints
- Pre and post-visit resources
- Planning focus sheets to tailor lessons
- All resources needed for undertaking one of our programmes

PROGRAMMES KINDLY SUPPORTED BY:



FREE MUSEUM BUS

Thousands of Rotorua ākonga benefit each year from the generosity of the Ngati Whakaue Education Endowment Trust Board. The trust provide the free Museum bus in order for classes to attend our education programmes, removing one of the biggest barriers for school – the hassle and cost of transportation.

The trust have been one of our strongest supporters and we cannot thank them enough.





ROTORUA
museum

Te Whare Taonga o Te Arawa
ART | CULTURE | HERITAGE



ROTORUA
LAKES COUNCIL