

TE WHARE TAONGA O TE ARAWA

ROTORUA museum

ENRICHING LOCAL CURRICULUM

Through Education Programmes

**Term 1 & 2
2024**

**Years 9 - 13
Secondary
Schools outside
Rotorua**



**ROTORUA
museum**

Te Whare Taonga o Te Arawa
ART | CULTURE | HERITAGE

KIA ORA WELCOME

Included in this booklet is information pertaining to our programmes on offer to schools.

We ask you to peruse this booklet and identify how our programmes can complement your students' learning. We are open to customising our programmes to align with your learning objectives.

With the Aotearoa New Zealand Histories Curriculum now being implemented, we have tailored our programmes to support this change.

For information on booking please see page 8 of this booklet.

Ngā manaakitanga
Rotorua Museum Education Team

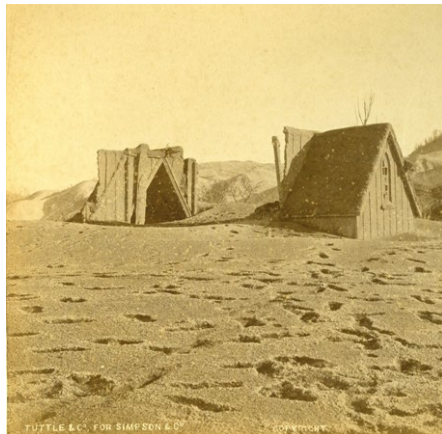
Taupopoki George McLeod

Rebecca Moore

Kristina Joyce



TARAWERA EXTREME NATURAL EVENTS



Level: Secondary

Subjects: Geography - NCEA Level 1

Duration: 1.5 Hours
Up to 30 students per session

Venue: Te Rūnanga Tea House

Supports achievement standard 91007

Students will be given an introductory talk about extreme natural events, focusing specifically on the 1886 Mt Tarawera eruption and the Rotorua landscape.

This will summarise the processes that produce volcanic eruptions, the sequence of events that occurred during the Tarawera eruption and how the environment was changed as a result.

Staff will talk about the effects the eruption had on people and the environment, both short and long term, and what may happen to the mountain in the future.

Students will then partake in hands-on and inquiry based activities involving rocks and historic images from the Museum collection.

EIGHTEEN TWENTY THREE WARFARE FROM THE NORTH



Level: Secondary

Subjects: History - NCEA Level 1

Duration: 1.5 Hours
Up to 30 students per session

Venue: Rotorua Library, Te Aka Mauri

Using a range of hands-on, minds-on activities (including maps, objects and taonga) students will explore the factors which caused the invasion of Mokoia Island in 1823.

What happened during that event and what were the consequences afterwards for both Te Arawa and Ngāpuhi?

Students will examine not only the past but how this event is perceived by both iwi today.

This programme is delivered by our educator Taupopoki George McLeod (Ngāti Whakaue, Tūhourangi) and is a valuable resource when wanting to understand the events that occurred.

TOURISM DEVELOPMENT IN ROTORUA



Level: Secondary

Subjects: Geography - NCEA Level 3

Duration: 1.5 Hours
Up to 30 students per session

Venue: Te Rūnanga Tea House

Supports achievement standard 91427 A Cultural Process – Tourism Development

Students will receive an interactive, relevant and engaging talk while learning about tourism development.

This will summarise the birth of tourism at the Pink and White Terraces and the effects of the Mt Tarawera eruption. It will cover the diversification and advancement of the township and the attempts at catalytic development by the Government.

The talk will also explore the mass development phase and specialisation of tourism in recent years.

Staff will highlight the impact that social, political, economic, natural and technological elements have on the environment of Rotorua. This also includes the short term impacts of COVID-19.

AMAZING RACE



Level: Junior (primary), Middle (primary)
Senior (primary), Intermediate,
Secondary

Subjects: Social Science – Aotearoa
History Curriculum

Duration: 1.5 Hours
Up to 30 students per session

Venue: Te Rūnanga Tea House

Government Gardens is not just a pretty place to go for a walk!

Uncover the mysteries of this special historic place, race against others in an Amazing Race to find clues, meet Rangitihī a renowned Te Arawa tupuna (ancestor) and Queen Victoria along the way.



ROTORUA EDUCATION NETWORK:



What is the Rotorua Education Network (REN)?

It's a one stop shop for teachers all neatly packaged into one payment, doing away with the hassle of booking and paying for each venue you visit. Each attraction or service provides competitive rates to the REN which will mean savings for your group.

REN can organise itineraries big or small specific to your needs. Bookings are arranged for all activities, accommodation and even transport if required.

Booking Times: Bookings for school groups are essential. Please book 4 – 6 weeks prior to confirm your visit.

Session Times: 1 - 3 hours (enquire at time of booking)

Book: Please call the Rotorua Education Network for more details including prices and availability

☎ 07 350 2154

🌐 rotorua-education.co.nz

Agrodome



**ROTORUA
museum**

Te Whare Taonga O Te Arawa
ART | CULTURE | HERITAGE



GOVERNMENT GARDENS

RESOURCES

Supplied: Upon email confirmation you will receive the following from REN:

- Lesson outline
- RAMS
- Handy hints
- Pre and post-visit resources
- Planning focus sheets to tailor lessons
- All resources needed for undertaking one of our programmes

PROGRAMMES KINDLY SUPPORTED BY:









ROTORUA
museum

Te Whare Taonga O Te Arawa
ART | CULTURE | HERITAGE





ROTORUA
museum

Te Whare Taonga o Te Arawa
ART | CULTURE | HERITAGE



ROTORUA
LAKES COUNCIL